

Tuesday 7<sup>th</sup> November 2023

Dear Parents / Carers,

### **Christmas Activities**



School is starting to get that 'Christmassy' feeling as we start to think about the festive season this year. Below are the details for the various events planned so far!

### **St George's Christmas Tree Festival**

Details for the festival will be sent out in a separate letter but the dates for each class visit are listed below:

#### **Wednesday 29<sup>th</sup> November:**

Year 5 / 6 – Magnolia, Mulberry and Maple – leaving school at 10.30am

#### **Thursday 30<sup>th</sup> November:**

Reception – Beech and Birch - leaving school at 9.15am

Year 1 / 2 – Cedar, Chestnut and Cherry – leaving at 10.30am

#### **Friday 1<sup>st</sup> December:**

Year 3 / 4 – Holly, Hawthorn and Hazel – leaving school at 12.45pm

Key Stage 2 choir – leaving school at 12.45pm

Families of children in the choir will receive a separate email containing further details about the choir event.

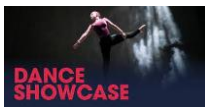
*If you would like to join a class on their visit please let your class teacher know or email school: [schooladmin@calegreen.stockport.sch.uk](mailto:schooladmin@calegreen.stockport.sch.uk)*

### **Christmas Cards**



Children are invited to send Christmas cards to their friends at Cale Green and to post them in the Christmas Post Box. Our Year 6 pupils, with some Year 2 helpers, will be delivering the post to the classes during dinnertime. The Christmas Post Box will be open from Friday 1<sup>st</sup> December.

## **Christmas Dance Showcase at Stockport School**



As part of our transition and partnership links with local high schools, children in Maple, Mulberry and Magnolia class will be walking to Stockport School to watch a Dance Showcase on Monday 4<sup>th</sup> December. They will be leaving school at 9.15am and will return to school for normal school dinner times. Further details will be sent out on a separate email.

## **Christmas Tree Light Switch on Assembly**



The large Christmas Tree which is housed in the hall, will be decorated by our Year 6 children on Thursday 30<sup>th</sup> November, as is our tradition. On Friday 1<sup>st</sup> December, during our Friday Family Assembly, our youngest and oldest children will have the honor of turning the lights on!

## **Early Years Nativity – ‘The Sleepy Shepherd’**



Children in our Nursery and Reception classes will get the opportunity to take part in a Nativity. They will be performing to parents and carers on a day incorporating the ‘Beginning of the Week’ Nursery and a day incorporating the ‘End of the Week’ Nursery. These will be taking place in the school hall on Friday 1<sup>st</sup> December and Tuesday 5<sup>th</sup> December at 2.15pm. Each family may bring 2 family members to watch either of the performances.

Further details will go on Tapestry in the next week.

## **Key Stage 1 Nativity - ‘Balmy Bethlehem’**



Children in Cedar, Cherry and Chestnut classes will also get the opportunity to take part in their very own Nativity. They will be performing to parents and carers on 2 days. These will be taking place in the school hall on Wednesday 6<sup>th</sup> December at 2pm and Thursday 7<sup>th</sup> December at 2pm. Each family may bring 2 family members to watch either of the performances.

## **Christmas Jumper and Dinner Day**



Everybody is invited to wear a Christmas jumper, t-shirt or sweatshirt on Friday 8<sup>th</sup> December for a small donation to the FareShare charity.

It is also our Christmas Dinner day. Children who usually have a packed lunch are invited to have a school dinner on this day if they wish. (Further details will be sent out in a separate email.)

### **Christmas Sing-along**



At the end of the school day on Friday 8<sup>th</sup> December, we would like to invite you to join with our school community and our Key Stage 1 and 2 School Choirs to sing some Christmas carols outside in our playground from 3.15pm – 4pm. There will be some hot refreshments to keep you toasty throughout.

### **'Frozen' the Musical at Stockport Academy**



Again, as part of our partnership links with local high schools, children in Maple, Mulberry and Magnolia class have been invited to watch a performance of Frozen at Stockport Academy. Children will be walking down to Stockport Academy on Monday 11<sup>th</sup> December. They will be leaving school at 12.15pm. Further details will be sent out in a separate email.

### **Lower Key Stage 2 Christmas Performances**



We now have 180 children across the 6, Key Stage 2 class which is too large a number to have performing at one time in the hall with an audience when considering fire safety restrictions. We also want to expand the opportunities children have to perform on a larger scale during their time in Key Stage 2. With this in mind, this year, our Key Stage 2 Christmas show, 'Fireside Nativity' will be performed by classes in Lower Key Stage 2: Hazel, Hawthorn and Holly classes.

They will be performing to parents and carers on 2 days. These will be taking place in the school hall on Wednesday 13<sup>th</sup> December at 6pm and Thursday 14<sup>th</sup> December at 1.45pm. Further details about tickets for this event will follow.

Children in Upper Key Stage 2: Magnolia, Maple and Mulberry classes will perform in a large-scale production in the summer term, in addition to the Year 6 Leavers' Assembly and Presentation at the end of the school year.

### **Christmas Story Time**



We would like to invite the children to come to school in their pyjamas (or cozy clothes) on Monday 18<sup>th</sup> December and to bring their favourite cuddly toy.

During the afternoon, we will be having Christmas story time sessions with festive cookies.

- Early Years                      1.30pm – 2pm
- Key Stage 1                      2pm – 2.30pm
- Lower Key Stage 2      2.30pm – 3pm
- Upper Key Stage 2      3pm – 3.30pm (a slightly later end to their school day!)

### **Christmas Parties**



Children are invited to come to school in their own party clothes on Tuesday 19<sup>th</sup> December. Mr. Hall, ex-pupil's Imogen and Libby's dad who is a DJ, has kindly agreed to host four separate party discos throughout the day. Children will have some party food and drink which school will provide. (Please keep us informed of any specific dietary needs)

Early Years                      9.15am – 10.15am

Key Stage 1                      10.15am – 11.15am

Lower Key Stage 2      1.30pm – 2.30pm

Upper Key Stage 2      2.30pm – 3.30pm (a slightly later end to their school day!)

### **Key Stage 2 Choir singing at Walthew House**



The choir have been invited to sing to Walthew House service users before they have their Christmas dinner on Tuesday 19<sup>th</sup> December. This will take place during the morning and they will return to school for normal school dinner time. Further details to follow.

### **Travelling Pantomime**



We have a travelling theatre company who will be joining us during the morning on Thursday 21<sup>st</sup> December. They will be performing the well-known pantomime, 'Little Red Riding Hood' to our Early Years, Key Stage 1 and Lower Key Stage 2 children.

### **Christmas Raffle**



The 'Friends of Cale Green' (FROGs) and members of staff have once again kindly donated prizes for our annual Christmas raffle to raise much needed funds for school.

Tickets are priced at £1.00 for a strip or £5.00 for 6 strips and will be on sale from Monday 27<sup>th</sup> November.

As part of our commitment to poverty proofing, ALL children will receive some FREE raffle tickets.

Children can bring in the correct money in a sealed envelope (no change will be given) or pay on Parent Pay.

**The draw will take place during the Christmas service on Friday 22<sup>nd</sup> December.**

As you can see, we have quite an action-packed end to November and throughout December. If you have any questions please don't hesitate to email school [schooladmin@calegreen.stockport.sch.uk](mailto:schooladmin@calegreen.stockport.sch.uk)

Yours sincerely,

Mrs Sarah McHugh